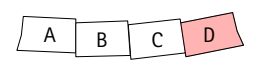
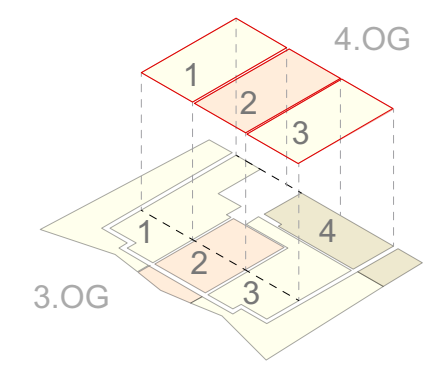


D_4OG.01
4,5-Zi.-Maisonette
Ebene 2
71,26 m²

D_4OG.02
3,5-Zi.-Maisonette
Ebene 2
71,39 m²

D_4OG.03
3,5-Zi.-Maisonette
Ebene 2
71,26 m²



**Plusenergie-Klimahäuser
Schallstadt-Weiermatten**

Brandhof 13-19
79227 Schallstadt

Gemarkung Wolfenweiler
Flst. 5709/1, 6410, 6411

Haus D | OG4

Maßstab: 1:100

Stand: 11.01.2021